



SECRETARIAT OF THE PACIFIC COMMUNITY
SECRÉTARIAT GÉNÉRAL DE LA COMMUNAUTÉ DU PACIFIQUE

Performance of Fiji's tuna longline fleet, and climate influences

Dr Graham Pilling, OFP



Aims

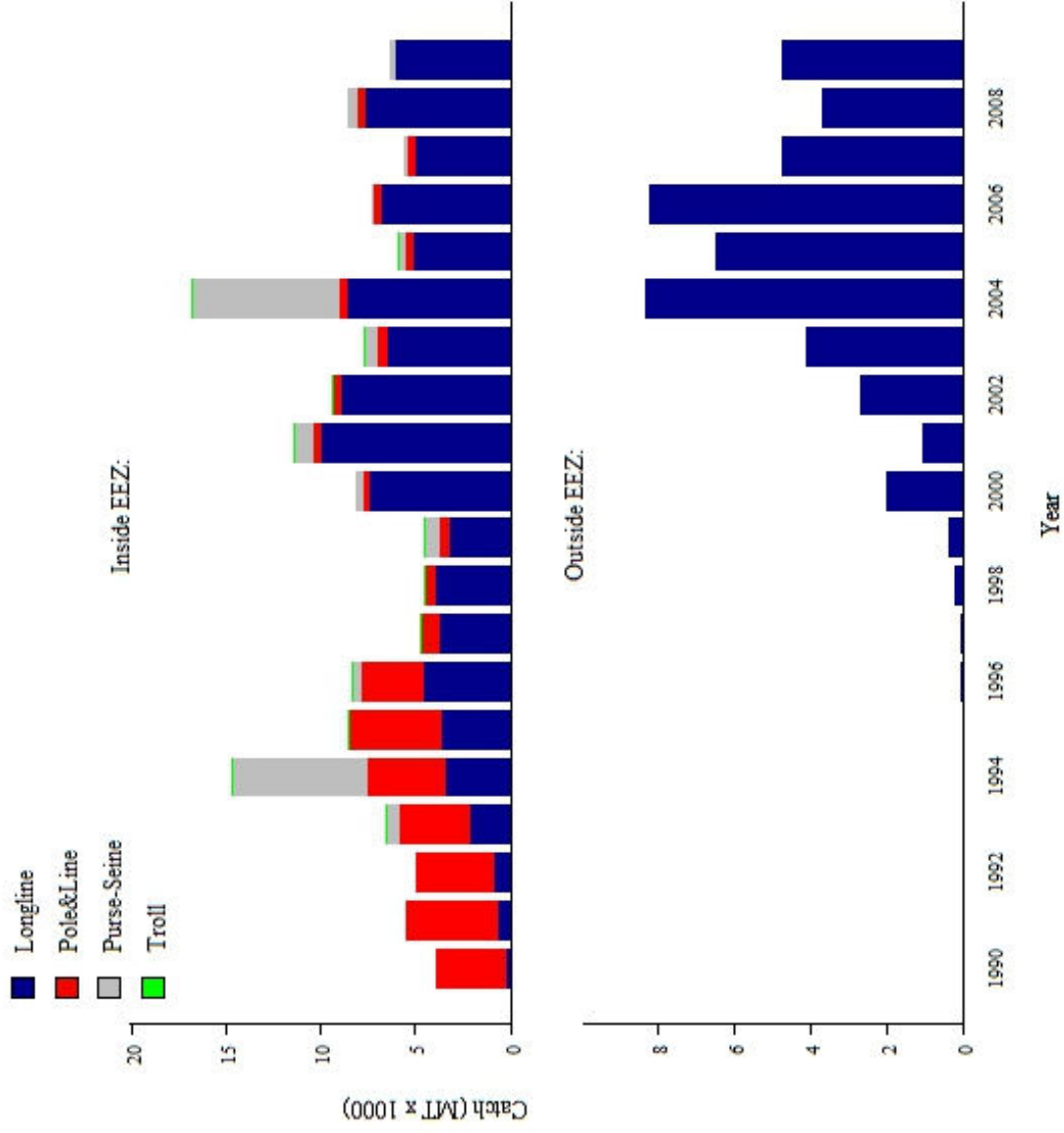
- Provide a description of the Fiji tuna fishery
- Summarise the 2004 economic analysis
- Examine trends in CPUE data
- Examine the influence of the climatic system on albacore fisheries in the region



Description of the Fiji fishery

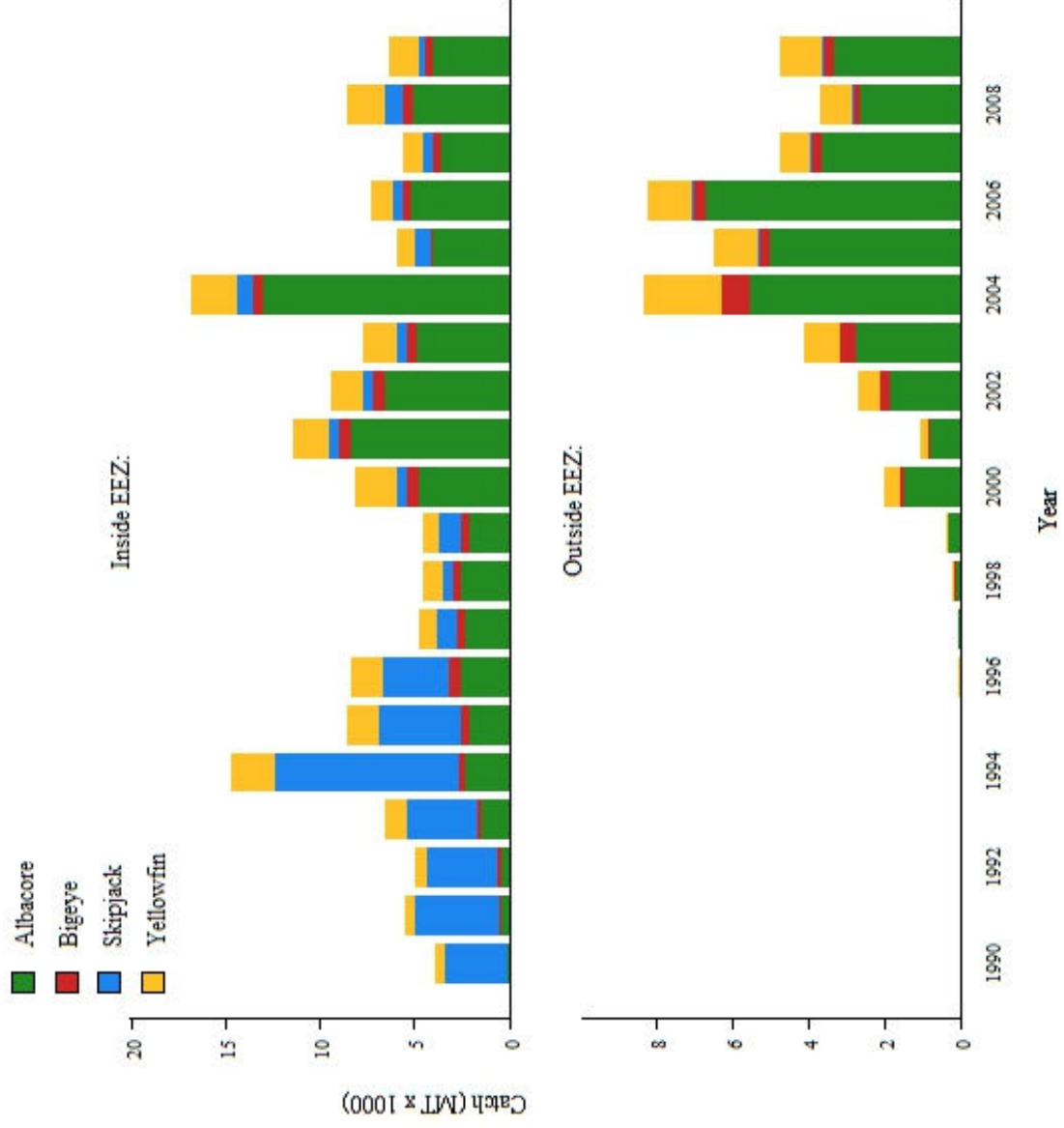


Total catch of target species by gear:



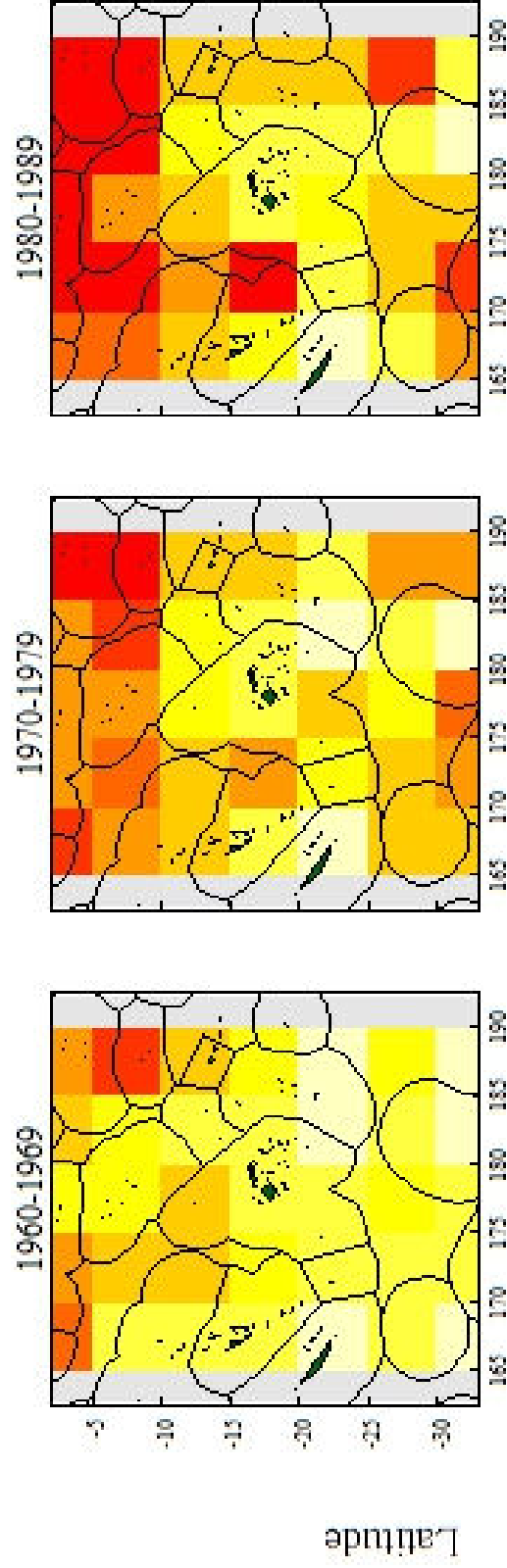


Total catch by target species:





Longline fishing effort (aggregated by decade):



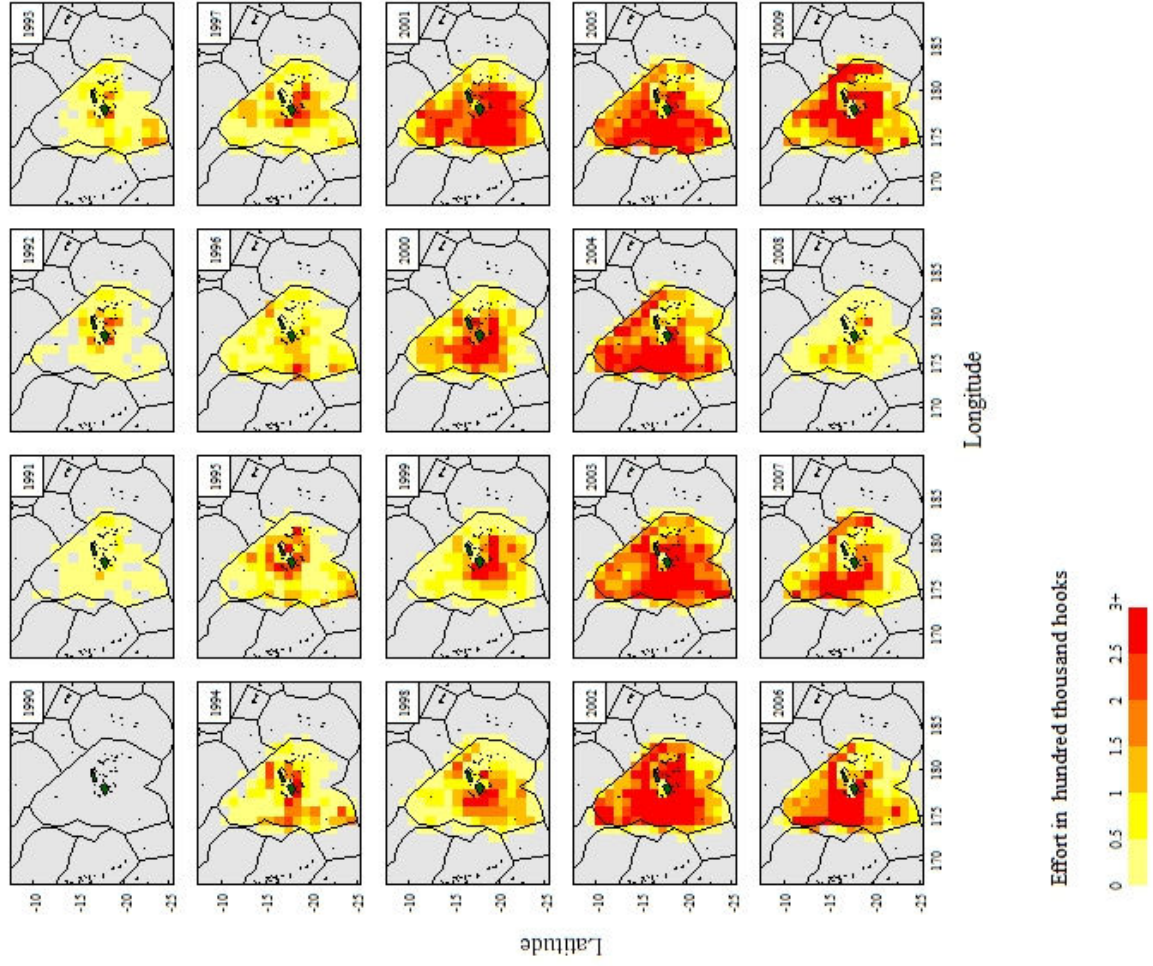
Effort in million hooks:



Longitude

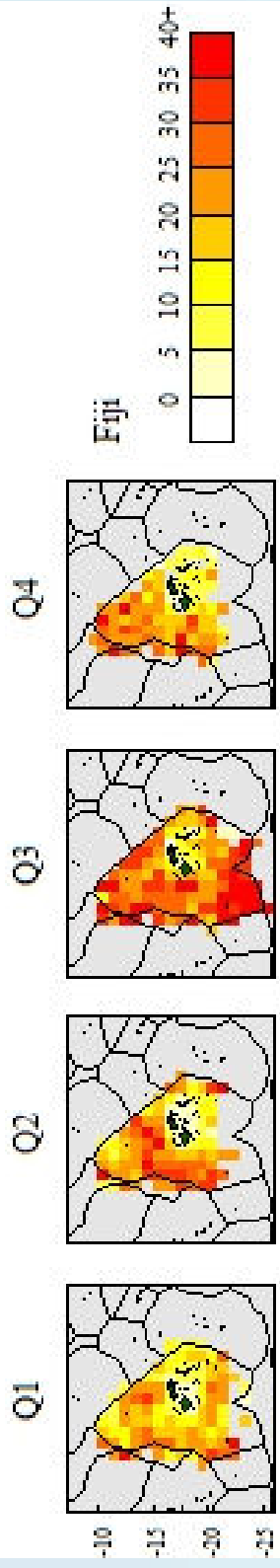


Aggregated longline fishing effort

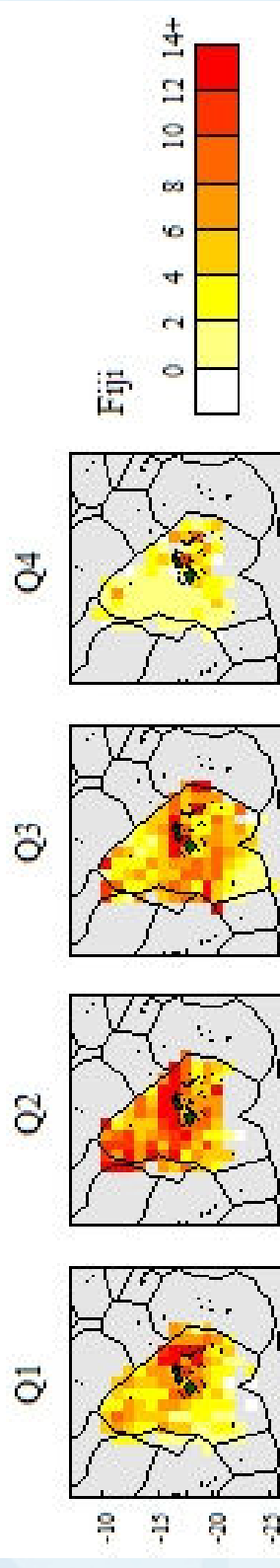




Mean Albacore tuna CPUE (kg/hundred hooks) for the longline fishery:

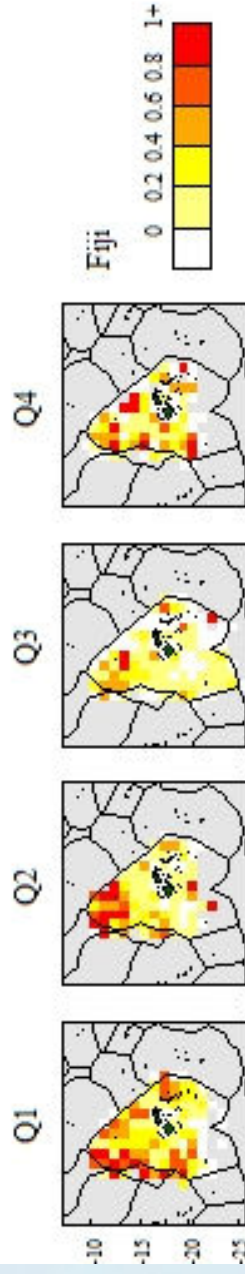


Mean Yellowfin tuna CPUE (kg/hundred hooks) for the longline fishery:

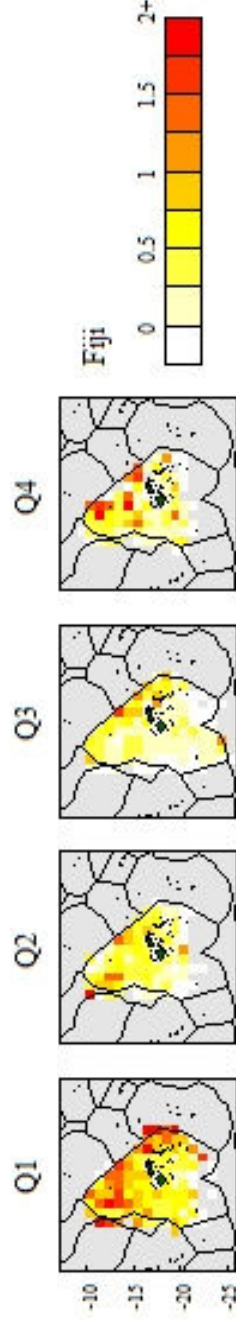




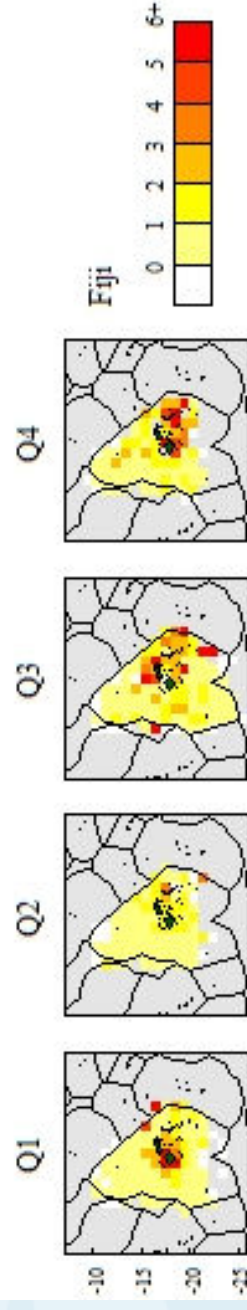
Mean Black marlin CPUE (kg/hundred hooks) for the longline fishery:



Mean Blue marlin CPUE (kg/hundred hooks) for the longline fishery:

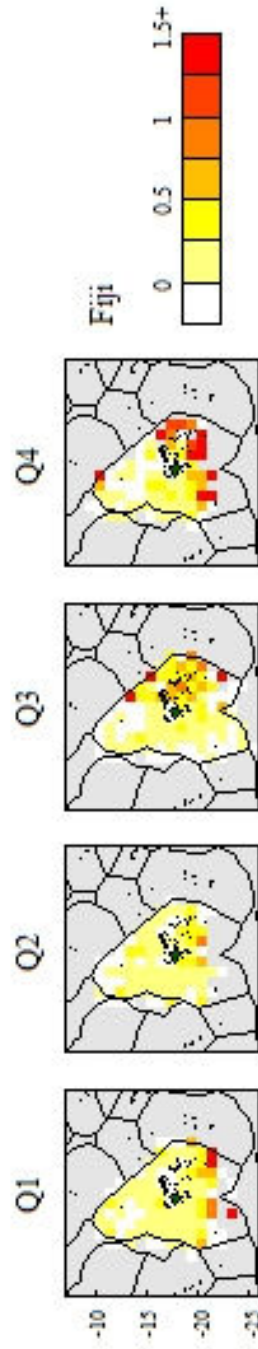


Mean Mahi mahi CPUE (kg/hundred hooks) for the longline fishery:

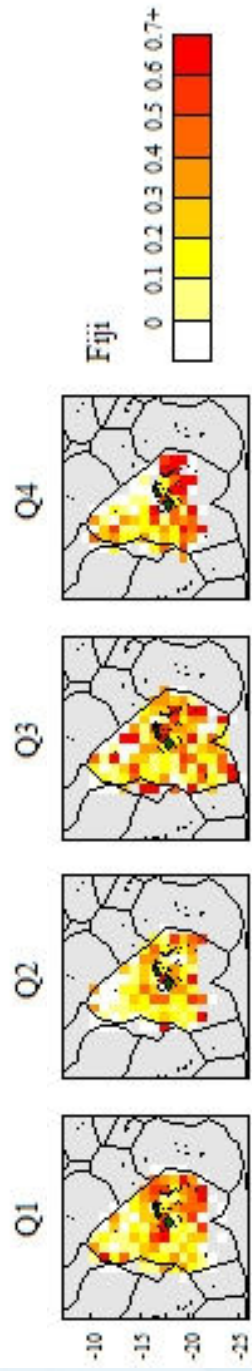




Mean Striped marlin CPUE (kg/hundred hooks) for the longline fishery:

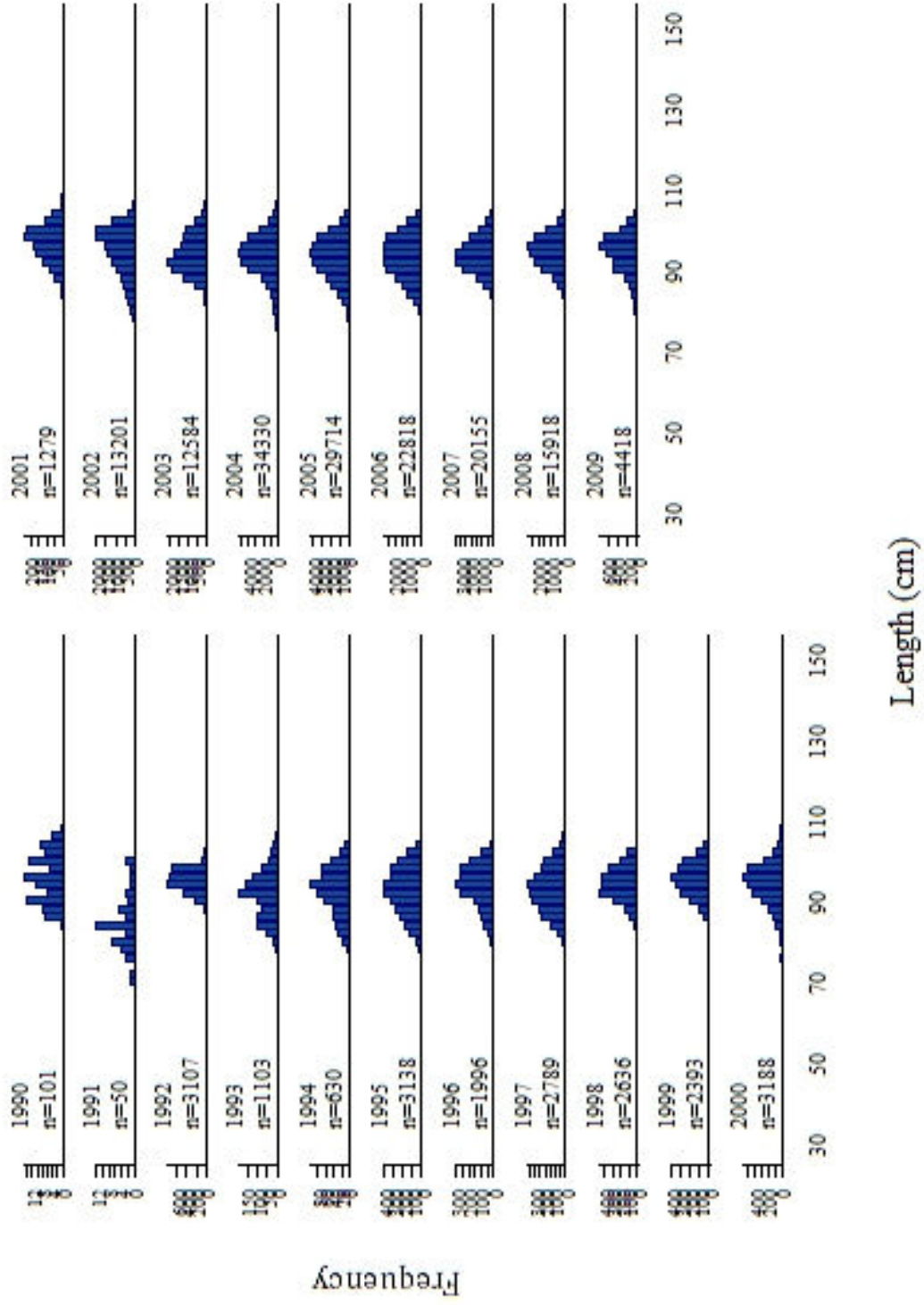


Mean Swordfish CPUE (kg/hundred hooks) for the longline fishery:



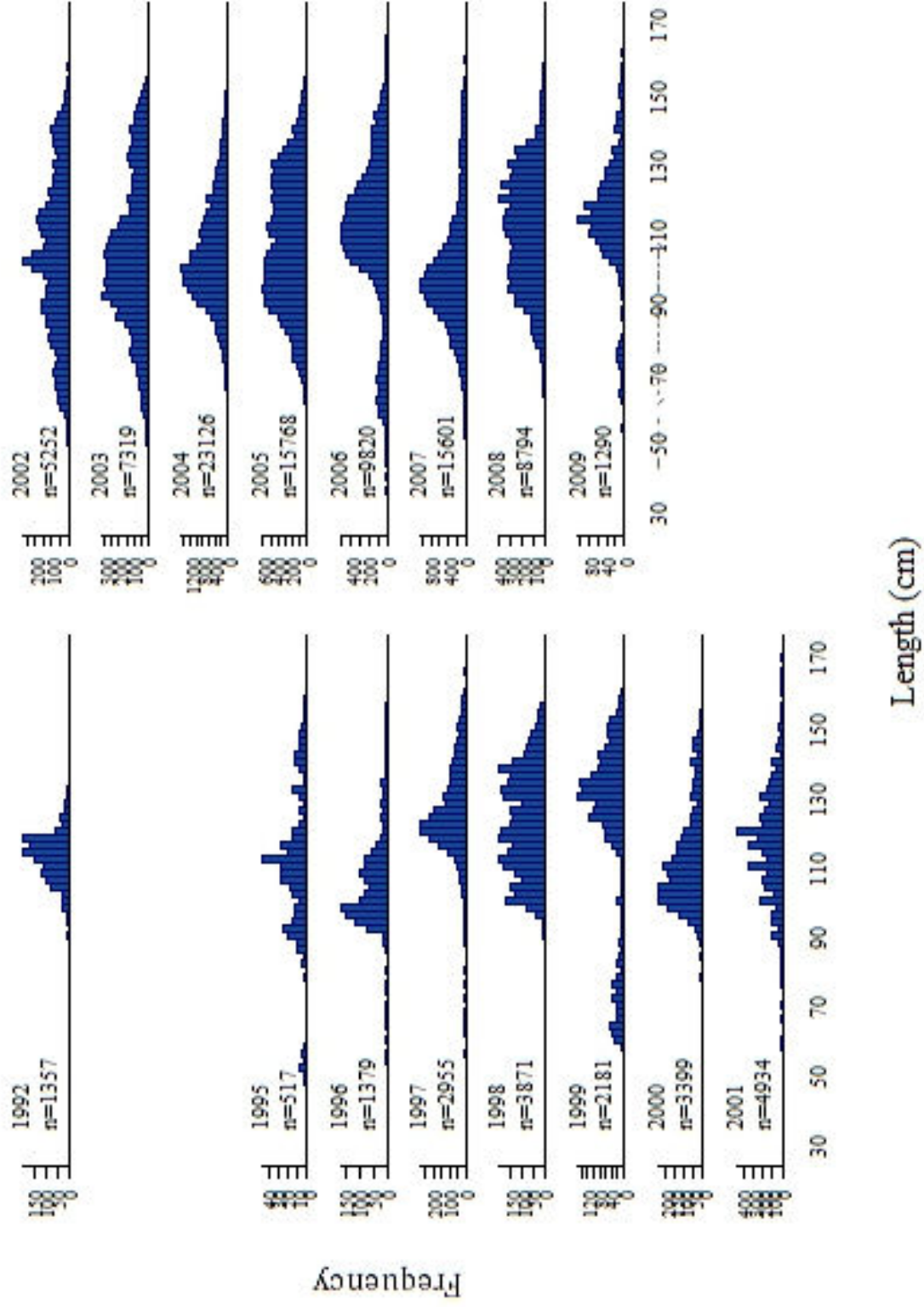


Size frequency for Albacore tuna (all flags combined)





Size frequency for Yellowfin tuna (all flags combined)

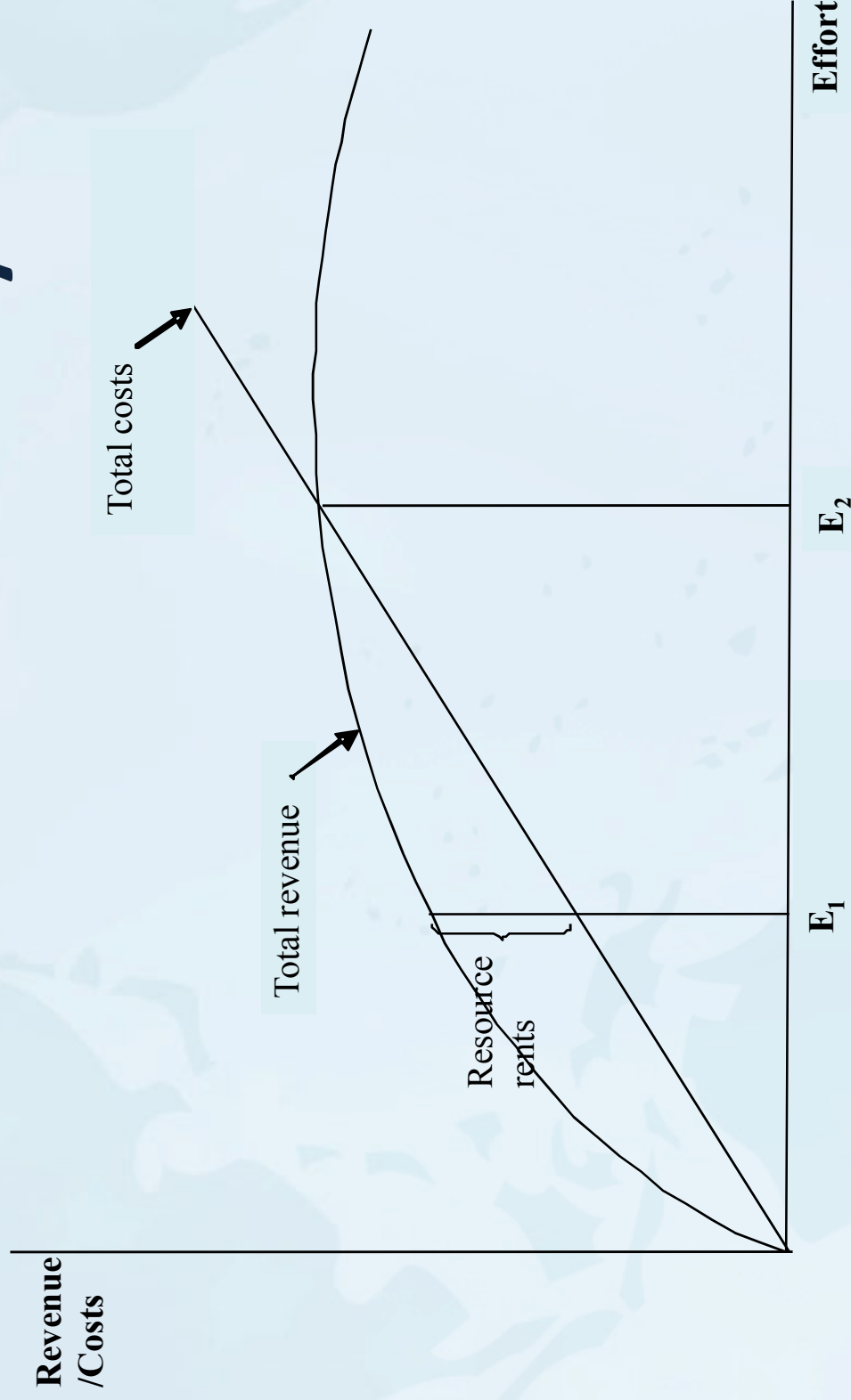




2004 FFA/SPC economic analysis

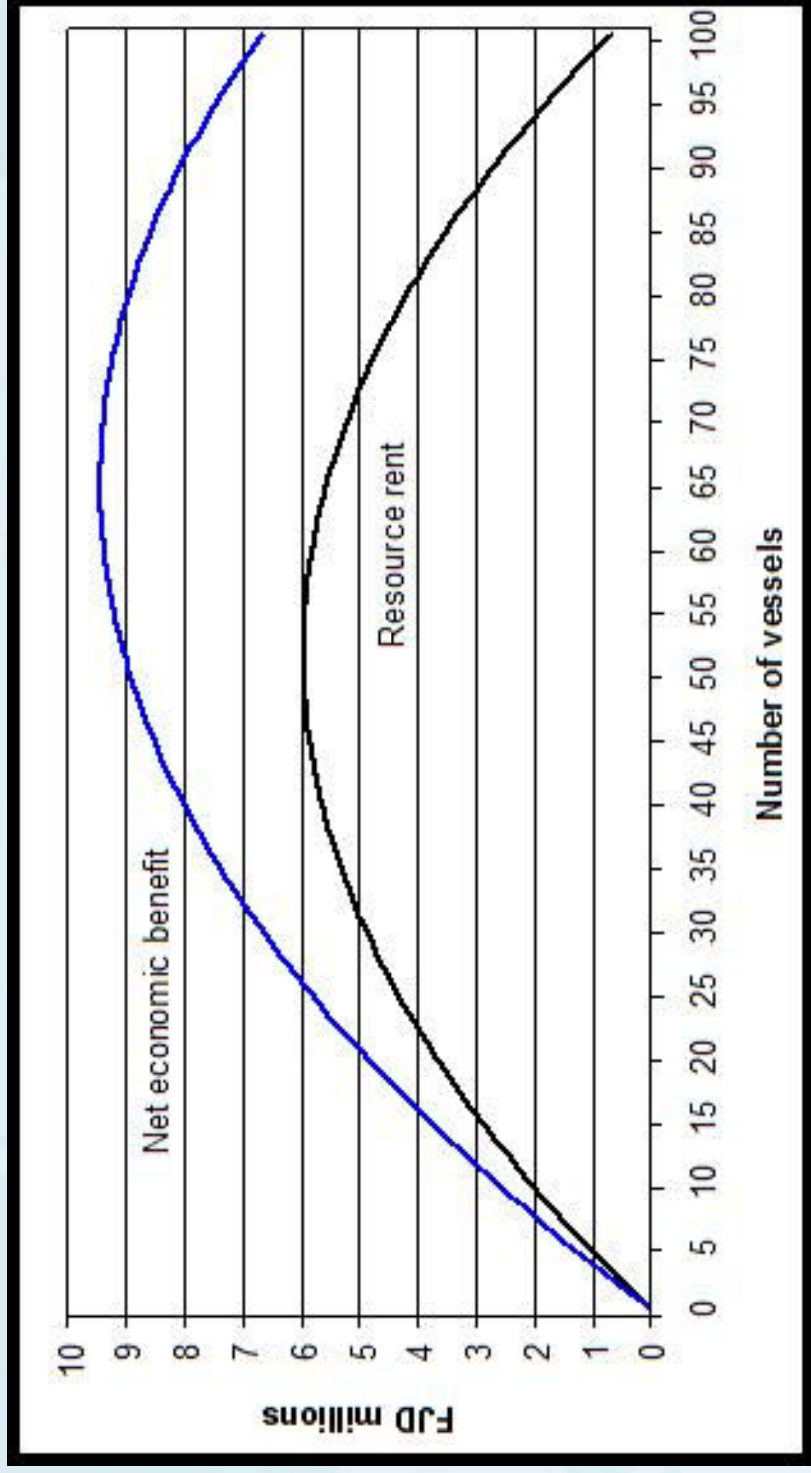


2004 Economic analysis





2004 outputs



Many assumptions (incl. average 419,000 hooks/vessel/yr)



2004 outputs

Max. net economic benefit

Scenario	No. hooks (millions)	No. vessels
'Base case'	27	64
Cost 10% lower	33.5	80
Cost 10% higher	21	50

- Remember:
 - 2004 analysis
 - Costs and prices changed
 - Fleet fishing pattern changed?
 - Vessel efficiency (and number of hooks) changed?



Trends in CPUE and Environmental influences also presented [not included here]



**Thanks for listening.
Any questions?**